

AMENDMENTS				
No	DESCRIPTION	DRAWN	AUTH'D	DATE
1		BV		29/07/13

GENERAL:

- INVERT LEVELS AND REFERENCE POINT DATA ARE SPECIFIED IN THE DESIGN DRAWINGS.
- INLET/OUTLET PIPES MAY JOIN STRUCTURE AT SKEW ANGLES.
- THIS STRUCTURE IS NOT APPROPRIATE FOR DIRECT CONNECTION TO WATER CORPORATION DRAIN UNLESS PROVIDED WITH SILT TRAP OR INCOMING SURFACE DRAINAGE HAS BEEN TRAPPED UPSTREAM.
- FOR INFORMATION RELATING TO GROUND PREPARATION OF STRUCTURES REFER TO MAIN ROADS TENDER DOCUMENT - PREPARATION No.405 (DRAINAGE STRUCTURES).

CONCRETE AND REINFORCEMENT

- ALL IN-SITU CONCRETE SHALL BE CLASS N32 IN ACCORDANCE WITH AS1379.
- ALL IN-SITU CONCRETE CORNERS SHALL HAVE A 20 CHAMFER UNLESS OTHERWISE NOTED.
- CEMENT MORTAR SHALL CONSIST OF ONE PART PORTLAND CEMENT (OR SIMILAR) AND THREE PARTS SAND.
- SLAB REINFORCEMENT SHALL CONFORM WITH HARD DRAWN FABRIC TO AS4471.
- MINIMUM CLEAR COVER TO REINFORCEMENT SHALL BE 50

LINER

- THE LINER SHALL BE REINFORCED CONCRETE SPUN TO AS4498
- THE MAXIMUM INLET/OUTLET PIPE OUTSIDE DIAMETER MUST BE LESS THAN 60% OF THE LINER INTERNAL DIAMETER. SEE TABLE 2
- MINIMUM SPACE OF 200 BETWEEN HOLES IN LINER
- MINIMUM OF 40% OF LINER SHALL REMAIN IN ANY HORIZONTAL PLANE.
- HOLES TO BE PUNCHED/CUT IN ACCORDANCE WITH MANUFACTURER'S SPECIFICATION.
- THE LINER SHALL HAVE EQUIVALENT PROPERTIES AND REINFORCEMENT OF CLASS 2 REP EXCEPT THAT THE REINFORCEMENT SHALL BE CIRCULAR.

STEP IRONS

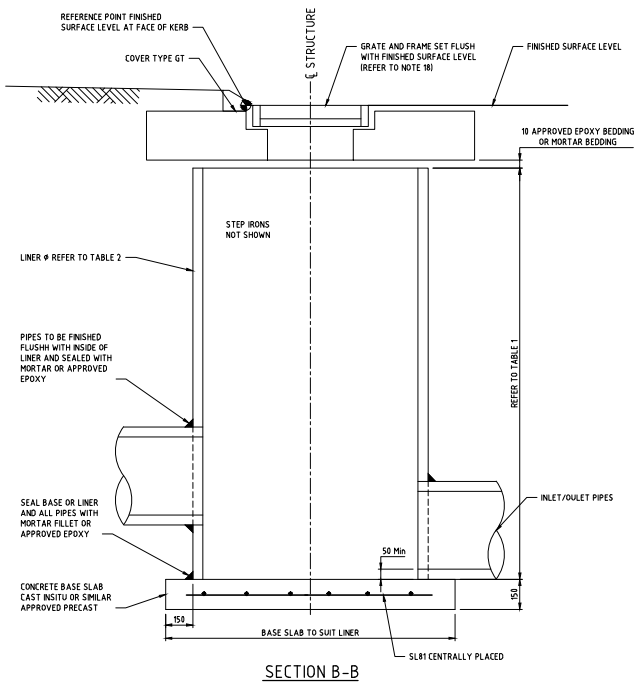
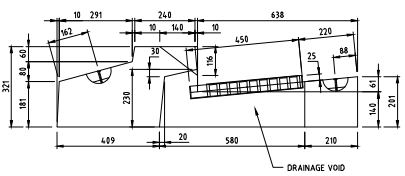
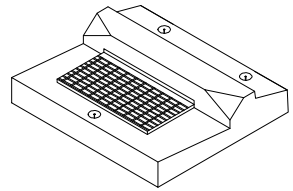
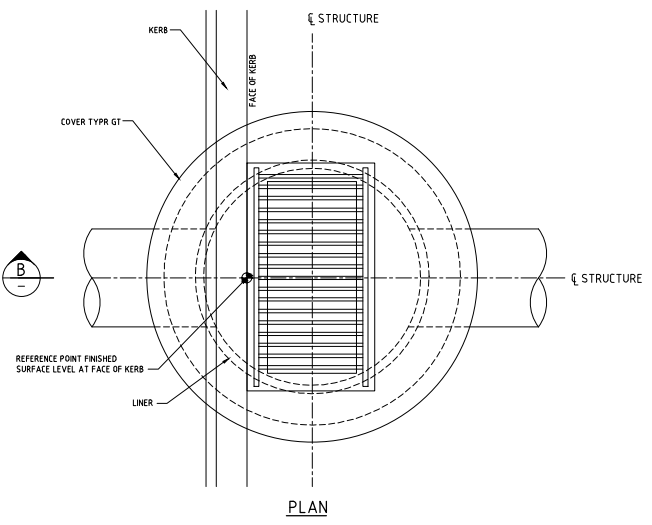
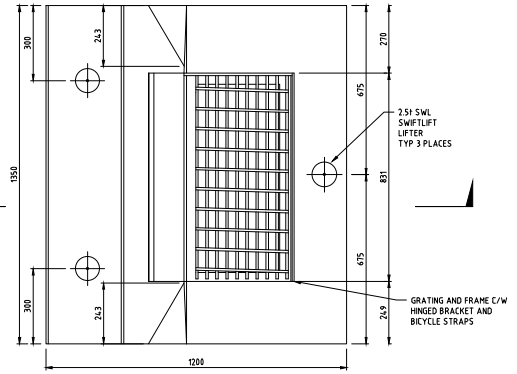
- FOR STRUCTURES DEEPER THAN 1200, STEP IRONS OR PREFABRICATED GALVANISED STEEL LADDER SHALL BE FITTED. THE LADDER SHALL BE FIXED WITH STAINLESS STEEL MASONRY ANCHORS IN ACCORDANCE WITH AS1657
- ORIENTATE STEP IRONS OR LADDER TO ENABLE EASY ACCESS AND TO FACE ONCOMING TRAFFIC.

OPEN GRADED ASPHALT

- REFER TO DRAWING D02121-122 IF OPEN GRADED ASPHALT IS USED FOR THE FINISHED SURFACE.

STRUCTURE TYPE	PIPE DEPTH
TGT	600 - 1200
SGT	1200 - 3600

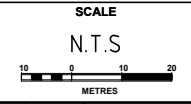
LINER ϕ	MAX. ϕ PIPE CONNECTING TO LINER
NOM. ϕ 900	NOM. ϕ 450
NOM. ϕ 1050	NOM. ϕ 525
NOM. ϕ 1200	NOM. ϕ 600



- ASSOCIATED STANDARD DRAWINGS**
- CoA KERBING STANDARD 00-06
 - MHWK KERBING STANDARD 9331-0316-3
 - CoA SPECIFICATION FOR THE CONSTRUCTION OF ASPHALT CROSSINGS
 - CoA SPECIFICATION FOR THE CONSTRUCTION OF CROSSINGS (BRICK/BLOCK PAVED)
 - CoA SPECIFICATION FOR THE CONSTRUCTION OF CONCRETE CROSSINGS



ORCHARD AVENUE ARMADALE
 LOCKED BAG No. 2 ARMADALE W.A. 6112
 TELEPHONE: 9399 0111
 FACSIMILE: 9399 0184



SURVEYED		ACCOUNT NO.	
DESIGNED	Oct 2013		
DRAWN	Oct 2013	APPROVED	
CHECKED	Oct 2013		
SUBMITTED	Oct 2013		

STANDARD DETAIL
 DRAINAGE
 TGT & SGT STRUCTURES
 CONSTRUCTED WITH LINERS

CAD FILE	
S13-04-A-Final - Standard - CoA Grate.dwg	
DRAWING STATUS	SHEET
FINAL	01 of 01
PLAN No.	AMENDMENT
S13-04	A