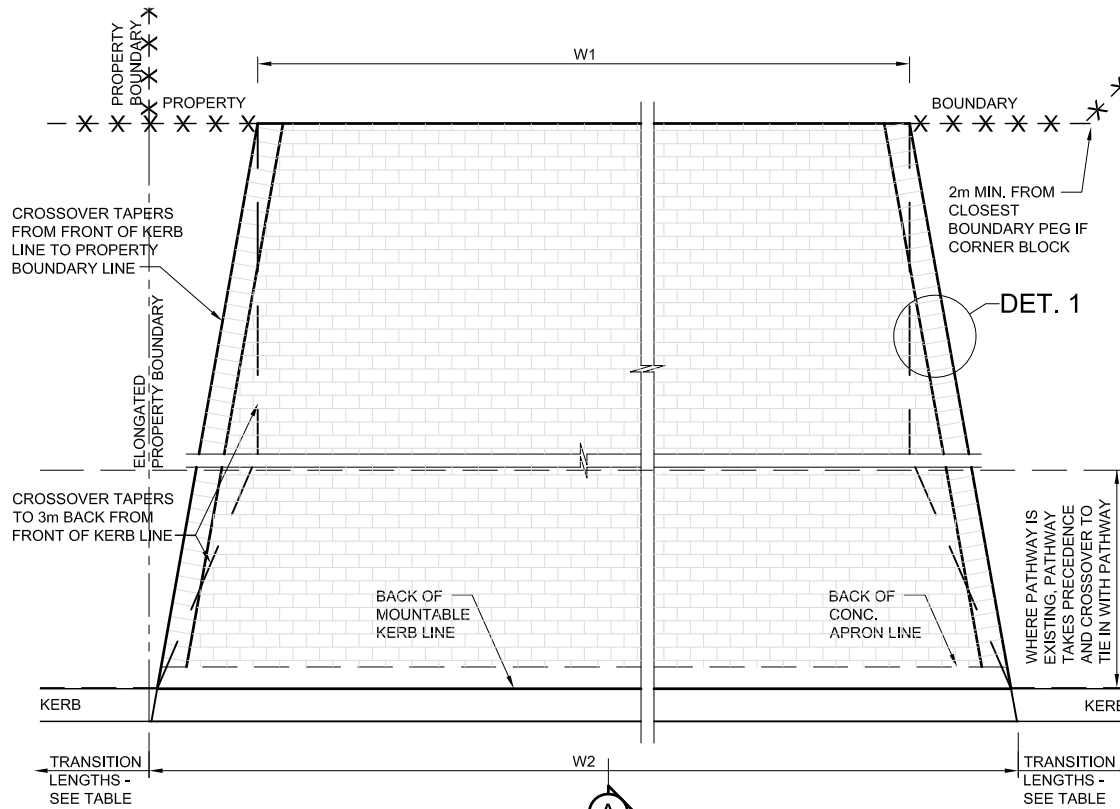


NOTES: - Brick/Block Paved Crossovers - Special Specifications and Conditions

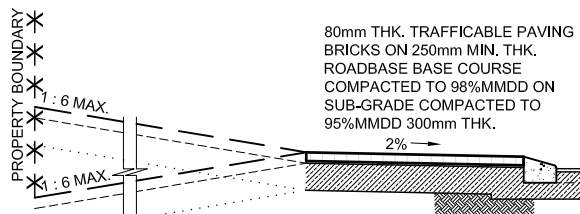
Brick/Block Paving Specifications

- BRICK/BLOCK PAVER THICKNESS: - PAVERS SHALL BE 80mm THICK VEHICLE TRAFFICABLE PAVER UNITS, CERTIFIED BY THE MANUFACTURER AS SUITABLE FOR THE CARRIAGE OF DESIGN TRAFFIC.
- BRICK/BLOCK PAVED CROSSOVERS SHALL BE CONSTRUCTED BY A CONTRACTOR EXPERIENCED IN SUCH WORK.
- THE CROSSING SHALL BE CONSTRUCTED NO SOONER THAN 24 HOURS AFTER THE KEYED-IN MOUNTABLE KERB OR CONCRETE LAYBACK (APRON) HAS BEEN INSTALLED.
- THE BRICK/BLOCK PAVING SHALL BE LAID ON WELL GRADED, CLEAN, YELLOW SAND IN ACCORDANCE WITH THE PAVER MANUFACTURER'S SPECIFICATIONS.
- BEDDING SAND SHALL BE NON-PLASTIC AND FREE FROM ANY FOREIGN MATERIAL, e.g. STONES, CLAY (BRICKLAYER'S SAND IS NOT SUITABLE). THE BEDDING SAND SHALL ONLY BE SCREEDED SLIGHTLY AHEAD OF LAYING THE PAVERS TO AVOID PREMATURE AND IRREGULAR COMPACTION. AFTER COMPACTION, THE BEDDING SAND SHALL BE 30mm TO 35 mm IN THICKNESS. ANY IRREGULARITIES IN THE BASE MUST NOT BE FILLED WITH BEDDING SAND BUT BROUGHT TO LEVEL BEFORE PLACEMENT OF THE SAND WITH ROAD BUILDING MATERIAL.
- THE OUTER EDGE OF ALL PAVING IS TO HAVE A CONCRETE EDGE RESTRAINT - SEE DETAIL 1.
- THE BRICK/BLOCK PAVERS SHALL BE COMPACTED IN PLACE IMMEDIATELY AFTER PLACEMENT, USING AN APPROPRIATE LOW AMPLITUDE PLATE COMPACTOR. THE BASE OF THE COMPACTOR SHALL BE COVERED SO AS NOT TO COME IN DIRECT CONTACT WITH THE PAVER AND CAUSE DAMAGE OR CRACKING.
- AFTER COMPACTION OF THE PAVER AND BEFORE VEHICULAR TRAFFIC. THE JOINTS SHALL BE FILLED WITH SAND USING A BROOM MOVING BACK AND FORTH OVER THE JOINTS. JOINT SAND SHALL BE WELL GRADED AND IN ACCORDANCE WITH THE PAVER MANUFACTURER'S SPECIFICATIONS.
- PAVERS SHALL BE LAID IN THE FOLLOWING PATTERNS, IE: STRETCHER, HERRINGBONE AND DIAMOND. THE STRETCHER BOND SHALL BE AT 90° TO THE TRAFFIC MOVEMENT TO ENSURE LOCKING OF THE BRICKS. THE HERRINGBONE CAN BE AT EITHER 45° OR 90° DEPENDING ON THE PROPERTY OWNER'S PREFERENCE.
- IRRESPECTIVE OF THE PATTERN USED, THE DRIVEWAY EDGE AND ROAD FACE PAVERS SHALL BE LAID AS A HEADER COURSE ON A MORTAR BED WITH A MINIMUM DEPTH AND WIDTH OF 100mm.

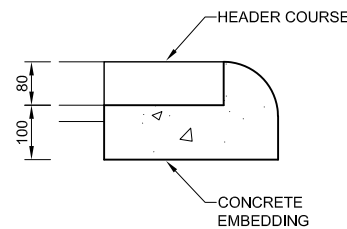


CONCRETE CROSSOVER - LAYOUT N.T.S.

KERB TRANSITION LENGTHS		
	PROFILE	LENGTH (mm)
MOUNTABLE		500
SEMI-MOUNTABLE		600
BARRIER		750



SECTION A N.T.S.



DETAIL 1 N.T.S.

No.	Date	Revision	By	Approved

Scale: N.T.S.
 Date: 08/11
 Surveyed: Date

CITY OF Armadale
 7 ORCHARD AVENUE, ARMADALE, WA 6112

THIS DRAWING REMAINS THE PROPERTY OF THE CITY OF ARMADALE AND SHALL NOT BE RETAINED, COPIED, OR USED WITHOUT WRITTEN APPROVAL FROM THE DIRECTOR ENGINEERING SERVICES

Author: EV Date: 11/20
 Designer: EV Date: 11/20
 Checker: TN Date: 11/20

Executive Manager Technical Services Approval

CROSSOVER DETAILS

CROSSOVER DETAILS - BRICK PAVING

Sheet No: 01
 Revision No: 01
 DWG No: 09-08-B

