

CITY OF ARMADALE

MINUTES

OF TECHNICAL SERVICES COMMITTEE HELD IN THE COMMITTEE ROOM,
ADMINISTRATION CENTRE, 7 ORCHARD AVENUE, ARMADALE ON MONDAY,
28 NOVEMBER, AT 7.01 PM.

PRESENT:

Cr J Everts Chair
Cr J Knezevich
Cr R Butterfield
Cr G A Best
Cr P J Hart
Cr A L Cominelli JP
Cr J A Stewart

APOLOGIES:

Nil

OBSERVERS:

Cr L Reynolds JP
Cr L Scidone
Cr C J MacDonald

IN ATTENDANCE:

Mr R S Tame	Chief Executive Officer
Mr W A Bruce	Executive Director Technical Services
Mr G Davies	Manager Technical Services
Mr J Gossmann	Manager Engineering and Design
Mr J Glassford	Manager Property Services
Mr P Lanternier	Manager Parks
Mr G Elsegood	Manager Civil Works
Mr B Sutton	Coordinator Waste Services
Mrs J Champion	Coordinator Support Services
Mr B Symmons	Asset Management Coordinator
Ms V Carpenter	Minute Secretary

PUBLIC:

Nil

DISCLAIMER

The Disclaimer for protecting Councillors and staff from liability of information and advice given at Committee meetings was not read as there were no members of the public in attendance.

DECLARATION OF MEMBER'S INTERESTS

Page 9 Cr Hart Non financial interest – Croyden Road, Roleystone – Speed Zoning

QUESTION TIME

Nil.

DEPUTATION

Nil.

CONFIRMATION OF MINUTES

RESOLVED

Minutes of the Technical Services Committee Meeting held on 24 October 2005, be confirmed.

**MOVED Cr Butterfield
SECONDED Cr Cominelli (7/0)**

ITEMS REFERRED FROM INFORMATION BULLETIN – ISSUE NO. 22

The following items were included for information in the “Technical Services” section:

- **Outstanding Matters**
Report on Outstanding Matters – Technical Services Committee T-1
- **Monthly / Quarterly Departmental Reports**
Technical Services Directorate Works Programme T-3
- **Minutes from Occasional Advisory Committees**
Bungendore Park Management Committee – 28 Sept 2005 T-7
Bungendore Park Management Committee – 26 Oct 2005 T-12
- **General Information**
Small Business Mastermind T-16
4N Business Training T-18
Ashtons Circus T-20

Committee noted the information and no further items were raised for discussion.

I N D E X

TECHNICAL SERVICES COMMITTEE

28 NOVEMBER 2005

ENGINEERING DESIGN AND DEVELOPMENT

ASSET MANAGEMENT PRESENTATION.....	4
UNDERGROUND POWER PRESENTATION CONNELL AVENUE,	5
KELMSCOTT - FOOTPATH REQUEST BETWEEN BROOKTON ROAD AND TURNER ROAD	7
CROYDEN ROAD, ROLEYSTONE - SPEED ZONING.....	10
FORREST ROAD, ARMADALE – REQUEST FOR FOOTPATH	12
LAKE ROAD - RAILWAY CROSSING.....	16

PARKS AND RESERVES

**BUDGET AMENDMENT – PURCHASE OF PARKS AND RESERVES DEPARTMENT PLANT AND EQUIPMENT	18
---------------------------------------------------------------------------------------------	----

PLANT

TENDER NO. 28/05 – SUPPLY OF ONE 4 WHEEL DRIVE TRACTOR.....	21
TENDER NO.27/05 – SUPPLY OF ONE MULTI TYRED ROLLER	25

ASSET MANAGEMENT PRESENTATION

The Manager Technical Services introduced the Asset Management Coordinator to the Councillors and explained that the presentation would also be useful background to the Western Australian Asset Management Improvement workshop on 7 December 2005.

The Asset Management Coordinator gave a short presentation on the initial asset management work carried out over the last three months and highlighted some of the emerging key issues.

There was much discussion after the presentation and it was noted that many municipalities throughout Australia were facing the same difficulties in that asset management was now a major issue to be dealt with.

The analysis results used in the presentation showed both a deteriorating path network and also an aging building asset stock. This is compounded by research showing a major shortfall in the renewal funding requirements. This gap can be reduced in a number of ways depending on the level of service that Council wishes to provide. The possible options for solving the building funding gap problem includes :

- Increase renewal funding to match budget requirements for chosen level of service.
- Reduce funding for new assets and use money to increase renewal funding
- Set a very low level of service – old, worn buildings.
- Close and then dispose of some buildings
- Increase the amount of revenue generated by buildings to increase funding
- Purchase commercial investments to increase funding
- Combination of all the above
- Do nothing/carry on as present and accept increased liability risk

Although pathways and buildings were used for the presentation asset management covers all Council assets.

A copy of the presentation is available from the Technical Services Directorate Secretary upon request.

UNDERGROUND POWER PRESENTATION

The Manager Engineering and Design gave a short presentation on the latest information (upgrade) on underground power.

The presentation highlighted the following major points relating to underground power:

- Improved standard and reliability of power supplies
- Significant contribution to the State Government's objective by improving the current infrastructure of Western Power
- Fewer outages caused by storms, trees, vehicle accidents, vandalism, wildlife and pole-top-fires.
- Reduced cost of annual tree pruning
- High voltage transmission lines will still remain above ground
- Faults still occur in the underground system and in general take longer to fix.
- Local Government must nominate the area or boundaries in consultation with the community and must have the approval from the majority of the community (75%) to go ahead with the project.
- After expressions of interest local government may be short listed. At this stage approximately \$35,000 has gone into the preliminary design and consultation, which may be lost if not selected.
- If short listed local government will develop a detailed proposal together with the Office of Energy and Western Power (Council must engage for this task an electrical and lighting consultant)
- Sign the Funding Agreement between all parties and estimate the total cost of the project as well as the individual lot or household contribution for the project.
- Current estimate for a coastal plain proposal is \$7000,000 plus additional cost for new street lighting (\$1.2m) as well as up to \$1.5m for a substation. The current split between Western Power and local government is 50% each. This may set every landholder or household back by approximately \$5,700 in coastal plain areas.
- Payment can be made through the Local Government which can obtain low interest loans from Treasury of approximately 5% for a maximum of 5 years.
- Household or lot costs for hill areas may be as large as \$8,500.
- SEIFA (Socio Economic Index for Areas) by Australian Bureau of Statistics is available with a further 15% subsidy.
- Timing of a project is between 3 to 4 years
- Next application closing November 2007 (preparation works and community consultation could start as early as mid to late 2006) project completion (if successful in the proposal stage) late 2009 or early 2010
- Local Government and the community working in partnership with Western Power and the Office of Energy to improve the essential infrastructure (reliability, safety and enhanced streetscape) with a 50% contribution.

A copy of the presentation is available from the Technical Services Directorate Secretary upon request.

Committee discussed the importance of keeping the community aware that while underground power is attractive and desirable in new “greenfields” developments, the cost to each property holder in existing suburbs remains too high, particularly when the main benefit seems to accrue to the service provider ie. Western Power, who could roll-out the program themselves through arrangement direct with consumers.

T115/11/05 RECOMMEND

That Council receive the presentation and reaffirm its position not to proceed with underground power applications as the cost to the community at large and the individual ratepayers is prohibitive.

MOVED Cr Hart

MOTION CARRIED/LOST (7/0)

***CONNELL AVENUE, KELMSCOTT - FOOTPATH REQUEST BETWEEN
BROOKSIDE ROAD AND TURNER ROAD***

WARD River
FILE REF: RDC/25
DATE 4 November
2005
REF KP
RESPONSIBLE
MANAGER MED

In Brief:

- At its meeting of Ordinary Council held on 1 August 2005, Council resolved (T80/07/05) the following:
“That officers investigate options for a footpath along Connell Avenue, across Wright Brook and north to Turner Road”.
- **Recommend**
That Council seeks funding from the Perth Bicycle Network Programme for the 2006/07 financial year to install a 2m wide concrete pathway along Connell Avenue between Brookside Avenue and Turner Road across Wright Brook (west side).

Tabled Items

Nil.

Officer Interest Declaration

Nil.

Strategic Implications

Physical Infrastructure

Develop an integrated transport system including safety aspects.

Legislation Implications

General assessment of relevant legislation (eg Local Government Act) has not revealed any restrictions.

Council Policy/Local Law Implications

General assessment has not revealed any applicable Policies/ Local Laws.

Budget/Financial Implications

Nil.

Consultation

Intra Directorate.

BACKGROUND

At its meeting of Ordinary Council held on 1 August 2005, Council resolved (T80/07/05) the following:

“That officers investigate options for a footpath along Connell Avenue, across Wright Brook and north to Turner Road.”

COMMENT

Analysis

Further to the above request, the Technical Services Directorate assessed the relevant path score as follows:

DESCRIPTION OF CRITERIA	WEIGHTING
Traffic Volume	3
Pedestrian Volume	2
Access (to Substantial Facilities)	0
Ability to walk off road	3
Road geometry	2
Infill /Link length	0
Disadvantaged Users	3 <i>(There are numerous requests from residents at this section)</i>
TOTAL WEIGHTING	13

The estimated cost of installing a 2m wide concrete footpath along Connell Avenue between Brookside Avenue and Turner Road across Wright Brook is \$27,000. This cost comprises of the construction of a footpath and associated civil works.

The Connell Avenue path is identified as an important local bicycle route, and thus is an important link for the Perth Bicycle Network Route SE74 being undertaken by the Department for Planning and Infrastructure (DPI). Therefore it provides an opportunity for the City to seek grant funding to install a Dual Use Path under the Perth Bicycle Network Funding Programme for 2006/07 financial year.

Should the grant application be successful then the matching funds (50% of the Project cost) will be allocated by the City through 2006/07-Bicycle Pathway Programme.

The necessary extension of the existing culvert across Wright Brook, due to the proposed pathway construction is accommodated through the City's Drainage budget.

Conclusion

The City will prepare a grant application supporting the installation of a 2m wide concrete pathway along Connell Avenue between Brookside Avenue and Turner Road (west side) across Wright Brook under the Perth Bicycle Network Programme to DPI for 2006/07 financial year.

Locality Plan



T116/11/05 RECOMMEND

That Council seeks funding from the Perth Bicycle Network Programme for the 2006/07 financial year to install a 2m wide concrete pathway along Connell Avenue between Brookside Avenue and Turner Road across Wright Brook (west side).

*MOVED Cr Butterfield
MOTION CARRIED/LOST (7/0)*

Cr Hart disclosed that as she resides on a property in Croyden Road there may be a perception that her impartiality in the matter may be affected, but declared that she would disregard this association, consider the matter on its merits and will be voting accordingly.

CROYDEN ROAD, ROLEYSTONE - SPEED ZONING

WARD Jarrah
FILE REF: RDC/31
DATE 7 November
2005
REF KP
RESPONSIBLE
MANAGER MED

In Brief:

- As a result of a request from the Technical Services Directorate, MRWA have undertaken a speed zone analysis for the section of Croyden Road between Heritage Drive and Redtail Lane, Roleystone. At present, the speed limit of this section is State Open Speed limit.
- **Recommend**
That Council endorses the Technical Services Directorate's approval of Main Roads Western Australia's (MRWA) proposal to reduce the speed limit from State Open Limit (110k/h) to 60km/h on Croyden Road, between Heritage Road and Redtail Lane, Roleystone and that MRWA be advised accordingly.

Tabled Items

Nil.

Officer Interest Declaration

Nil.

Strategic Implications

Physical Infrastructure

Develop an integrated transport system including safety aspects.

Legislation Implications

General assessment of legislation (eg Local Government Act) has not revealed any restrictions.

Council Policy/Local Law Implications

Assessment of Policy/Local Law has not revealed any restrictions.

Budget/Financial Implications

Nil.

Consultation

Main Roads Western Australia

BACKGROUND

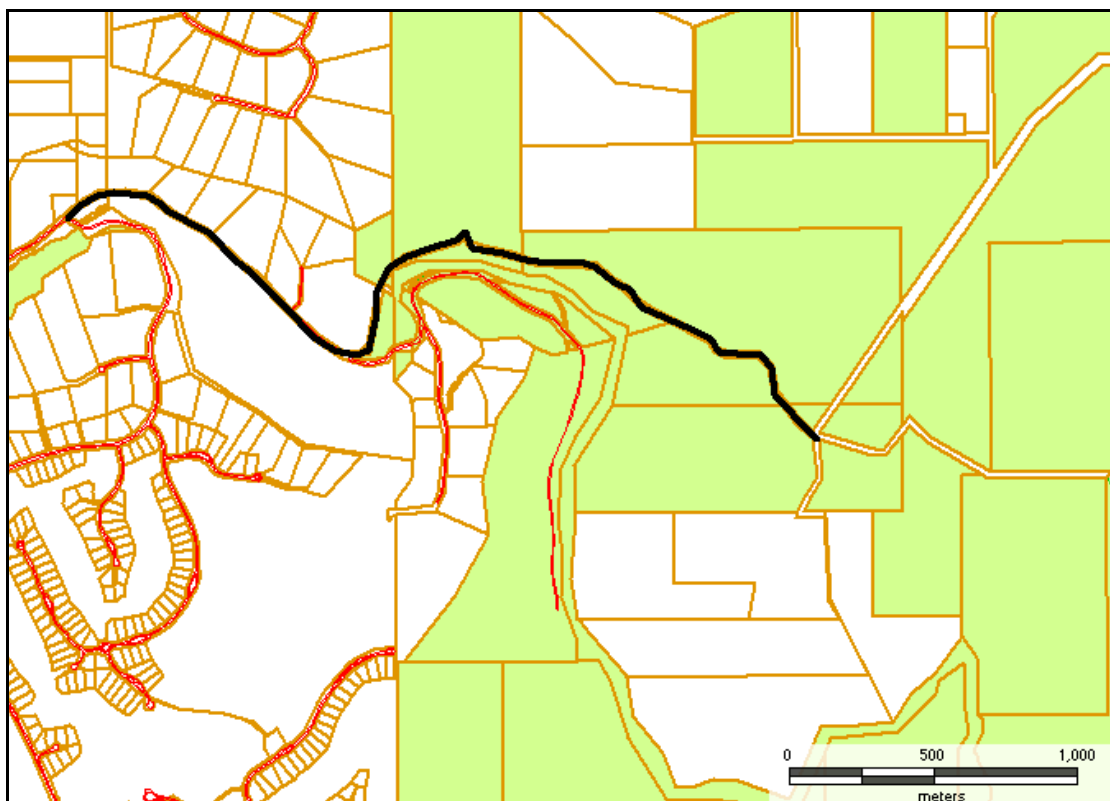
The Technical Services Directorate has recently written to Main Roads Western Australia (MRWA) seeking a speed zone analysis be undertaken on Croyden Road, between Heritage Drive and Redtail Lane, Roleystone. This was as a result of concerns raised by residents finding difficulties entering and exiting their properties and side roads. The speed limit on this section of road is Open Speed limit (110km/h).

MRWA has advised that a speed zone analysis has been completed and has agreed to reduce the speed limit to 60km/h along Croyden Road between Heritage Drive and Redtail Lane. Council's approval to implement this re-classified speed limit at this section of road is required as part of the legal requirement. The Executive Director Technical Services has approved this re-classification under power of delegated authority.

Conclusion

Council approves Main Roads Western Australia's proposal to reduce the speed limit from State Open Limit (110km/h) to 60km/h on Croyden Road, between Heritage Drive and Redtail Lane, Roleystone.

Location Plan



T117/11/05 RECOMMEND

That Council endorses the Technical Services Directorate's approval of Main Roads Western Australia's (MRWA) proposal to reduce the speed limit from State Open Limit (110k/h) to 60km/h on Croyden Road, between Heritage Road and Redtail Lane, Roleystone and that MRWA be advised accordingly.

*MOVED Cr Butterfield
MOTION CARRIED/LOST (7/0)*

FORREST ROAD, ARMADALE – REQUEST FOR FOOTPATH

WARD Lake
RDF/9
DATE 3 November
2005
REF KP
RESPONSIBLE
MANAGER MED

In Brief:

- At its meeting of Ordinary Council held on 4 July 2005, Council resolved (T64/06/05) the following:
“That officers assess the construction of a footpath on Forrest Road between Eighth Road and the entrance to the St Francis Xavier school for inclusion in the footpath programme and that traffic counts be undertaken to assess the increase in traffic movements due to the opening of school”.

- **Recommend:**

1. That Council include a footpath on Forrest Road between Eighth Road and the entrance to the St Francis Xavier school in the 2006/07 Footpath Programme for a total construction cost of \$23,000 and defer from the 2006/07 Footpath Programme the following pathways or section of pathways until 2007/08 :

Schruth Street North at a cost of \$18,500 (100m)
Chisholm Circle at a cost of \$4,500

2. That St Francis Xavier school be advised of Council’s action.

Tabled Items

Nil.

Officer Interest Declaration

Nil.

Strategic Implications

Physical Infrastructure.

Develop an integrated transport system including safety aspects.

Legislation Implications

General assessment of relevant legislation (eg Local Government Act) has not revealed any restrictions.

Council Policy/Local Law Implications

General assessment has not revealed any applicable Policies/ Local Laws.

Budget/Financial Implications

The estimated cost for the construction of the Forrest Road footpath is \$23,000. The cost will be accommodated in the pathway programme.

Consultation

Intra Directorate.

BACKGROUND

At its meeting on 4 July 2005, Council resolved (T64/06/05) as follows:

“That officers assess the construction of a footpath on Forrest Road between Eighth Road and the entrance to the St Francis Xavier school for inclusion in the Footpath Programme and that traffic counts be undertaken to assess the increase in traffic movements due to the opening of the school”.

COMMENT

The Technical Services Directorate had advised the Development Services Directorate to include footpath construction in the initial development application for St Francis Xavier school.

Analysis

The Technical Services Directorate reviewed the programme and reassessed relevant path scores. The weighting of the Footpath is 13 as set out below:

DESCRIPTION OF CRITERIA	WEIGHTING
	FORREST ROAD
Traffic Volume	3
Pedestrian Volume	2
Access (to Substantial Facilities)	5
Ability to walk off road	3
Road geometry	0
Infill /Link length	0
Disadvantaged Users	0
TOTAL WEIGHTING	13

Traffic Volume:

The recorded data for traffic volume along this section of Forrest Road is as follows:

7 Day Averages

PERIOD	TRAFFIC VOLUME (vehicle/day)
02/11/1998- 09/11/1998	1542
09/01/2001- 16/01/2001	1390
09/09/2005- 16/09/2005	1633

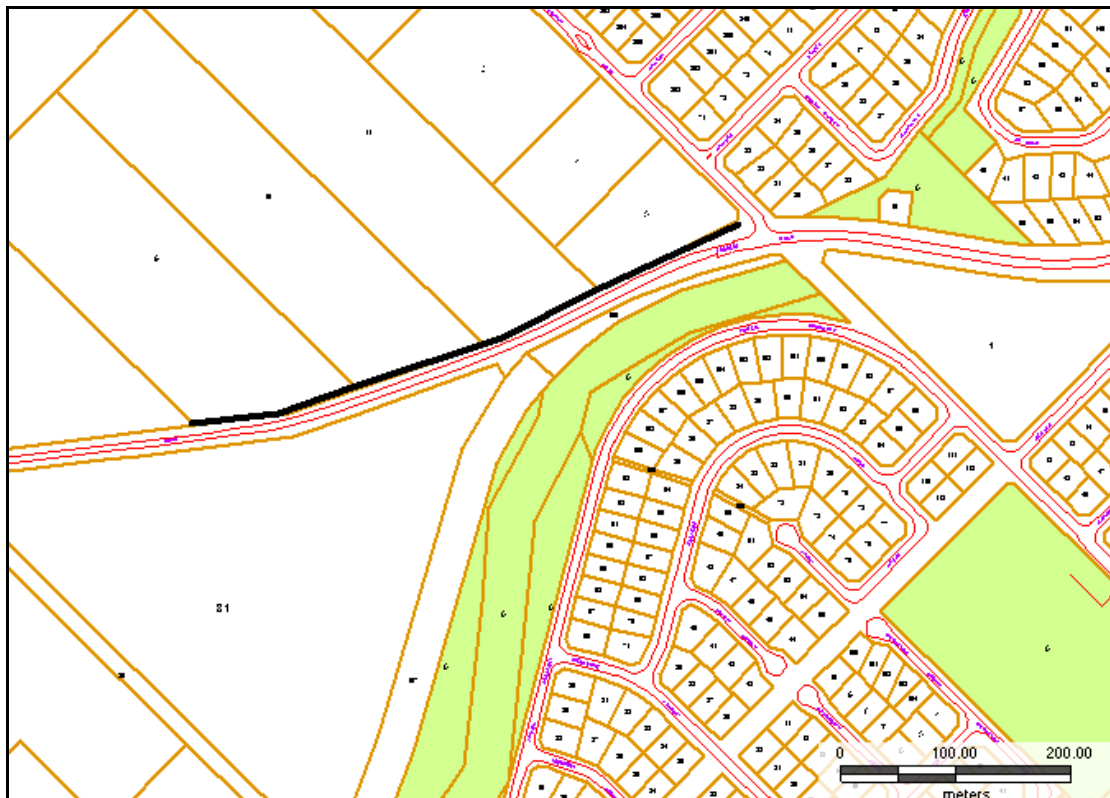
There is no evidence of increased traffic volume compared to the other equivalent roads within the City.

Conclusion

The above analysis indicated the total score is 13 and the current pathway programme scores for 2005-2006 are between 10-12 and for 2006-07 the weighting will be between 9-10.

It is therefore recommended that Council include in the Footpath Programme the footpath on Forrest Road between Eighth Road and the entrance to the St Francis Xavier school for construction in the 2006/07 programme for a total cost of \$23,000 and defer the last pathway from the proposed 2006/07 Programme - Schruth Street North – (\$18,500) as well as a section of Chisholm Circle (\$4,500) until 2007/08.

Locality Plan



T118/11/05 RECOMMEND

- 1. That Council include a footpath on Forrest Road between Eighth Road and the entrance to the St Francis Xavier school in the 2006/07 Footpath Programme for a total construction cost of \$23,000 and defer from the 2006/07 Footpath Programme the following pathways or section of pathways until 2007/08 :**

**Schruth Street North at a cost of \$18,500 (100m); and
Chisholm Circle at a cost of \$4,500.**

- 2. That St Francis Xavier school be advised of Council's action.**

MOVED Cr Best

MOTION CARRIED/LOST (7/0)

LAKE ROAD - RAILWAY CROSSING

WARD Palomino
FILE REF RDC/18
DATE 9 November 2005
REF RGD
RESPONSIBLE MANAGER EDTS

In Brief:

- Correspondence from Minister for Planning and Infrastructure regarding the closure of the Lake Road railway crossing.
- **Recommend**
That the advice from the Minister for Planning and Infrastructure in a letter dated 26 October 2005, regarding the closure for the Lake Road railway crossing be noted.

Tabled Items

Nil.

Officer Interest Declaration

Nil.

Strategic Implications

Physical Infrastructure

Develop an integrated transport system including safety aspects.

Legislation Implications

Full assessment of all relevant legislation indicates no restriction.

Council Policy/Local Law Implications

General Assessment has not revealed any applicable Policies/Local Laws.

Budget/Financial Implications

Nil.

Consultation

Main Roads Western Australia & Road Traffic Authority

COMMENT

The following correspondence has been received from the Minister for Planning and Infrastructure confirming that if the closure of the Lake Road railway crossing is finally approved, then a pedestrian crossing will be installed at that location:

“Thank you for your letter of 28 June 2005, concerning delay to the completion of the Champion Drive extension to Tonkin Highway project.

While I am disappointed that the Champion Drive project has been delayed, I now understand that the extension may be open in January 2006.

Given the delay, I am reluctant to finalise a decision concerning the closure of the Lake Road railway crossing until such time as the extension is operating. It is not possible to fully assess the impact of the closure of the crossing and identify possible access improvements for the area until Champion Drive is open .

However, if the decision is to permanently close the railway crossing, the Public Transport Authority will install a pedestrian crossing at the crossing to minimise the inconvenience to local residents in the area.

I understand that Main Roads has installed additional temporary signage at the intersection of Albany Highway with the Tonkin Highway on-ramp, guiding southbound motorists to Lake Road via Corfield Street. It is intended that this signage stay in place for the foreseeable future.

Once completed, I consider the extension of Champion Drive will significantly improve the access to the suburb of Westfield.”

The anticipated date for the opening of Champion Drive between Lake Road and Tonkin Highway is 23 January 2006.

T119/11/05 RECOMMEND

That the advice from the Minister for Planning and Infrastructure in a letter dated 26 October 2005, regarding the closure for the Lake Road railway crossing be noted.

*MOVED Cr Stewart
MOTION CARRIED/LOST (7/0)*

****BUDGET AMENDMENT – PURCHASE OF PARKS AND RESERVES
DEPARTMENT PLANT AND EQUIPMENT**

WARD All
FILE REF: RES/1
DATE 28 November
2005
REF GP/JC
RESPONSIBLE
MANAGER MP

In Brief:

- At its meeting of Ordinary Council held on 4th July 2005 Council resolved (T55/06/05):
“1. That the Parks and Reserve Department’s rubbish truck which is due for replacement in 2005/06 not be replaced
2. That the responsibility for emptying park bins throughout the City be undertaken by the City’s Waste Services Department
3. That \$280,000 currently allocated in the 2005/06 Support Services Plant and Vehicle Replacement budget for replacement of the Parks and Reserves Department’s rubbish truck be re-allocated to the purchase of plant, vehicles and equipment for the Parks Department as outlined in the report.”
- This report details the equipment that is to be purchased and formally seeks Council approval of the required budget amendment.

Tabled Items

Nil.

Officer Interest Declaration

Nil.

Strategic Implications

Corporate Services

To achieve maximum community benefit from effective use of resources (staff, finances and information technology).

Legislation Implications

Assessment of legislation indicates that the following regulations apply:

Local Government (Functions and General Regulations 1996 s3.57 (11)(2)(f)

Section 6.8 of the Local Government Act 1995:

Council Policy/Local Law Implications

Assessment of Policies/Local Laws indicates that the following are applicable:

Policy ENG 5 – Tendering and Purchasing.

Budget/Financial Implications

Current budget allocation \$280,000

Re-allocated budget \$280,000.

Consultation

Departmental Manager/Coordinator Support Services/Operators/Mechanical Staff.

COMMENT:

At its meeting of Ordinary Council held on 4th July 2005 Council resolved (T55/06/05):

- “1. That the Parks and Reserve Department’s rubbish truck which is due for replacement in 2005/06 not be replaced
2. That the responsibility for emptying park bins throughout the City be undertaken by the City’s Waste Services Department
3. That \$280,000 currently allocated in the 2005/06 Support Services Plant and Vehicle Replacement budget for replacement of the Parks and Reserves Department’s rubbish truck be re-allocated to the purchase of plant, vehicles and equipment for the Parks Department as outlined in the report .”

The following recommendation now provides details of the plant and equipment to be purchased and Council approval is sought for the required budget amendment.

T120/11/05 RECOMMEND

That Council, pursuant to Section 6.8 of the Local Government Act 1995:

- (a) authorize \$280,000 being spent on the following items of plant and equipment associated with the re-structure of Parks and Reserves Department maintenance operations:

Reticulation Operations	
4x4 Utility	\$26,000
Custom lockable body	\$13,000
Hand tools	\$5,000
Mini trench digger and trailer	\$7,000
Mowing Operations	
Truck with dual side tip	\$70,000
2 x Custom heavy duty tandem trailer (\$18,000 ea)	\$36,000
Outfront ride-on mower	\$33,000
2 x Zero turn ride-on mowers (\$22,000 ea)	\$44,000
Blower/back pack	\$1,100
Pole saw	\$1,400
Edger	\$1,500
Spray Operations	
4x4 Utility (tray top)	\$32,000
Spray unit	\$10,000
TOTAL	\$280,000

(b) amend its 2005-06 Annual Budget - to accommodate (a) above - as follows-

- add to the Budget, the plant and equipment items as per part (a) above, totalling \$280,000.

- delete from the budget, the \$280,000 expenditure allocation for the purchase of a Rubbish Truck.

****ABSOLUTE MAJORITY REQUIRED**

MOVED Cr Cominelli
MOTION CARRIED/LOST (7/0)

TENDER NO. 28/05 – SUPPLY OF ONE 4 WHEEL DRIVE TRACTOR

WARD All
FILE REF: TEN/28/05
DATE 9 November
2005
REF JC
RESPONSIBLE
MANAGER MTS

In Brief:

- Tender No. 28/05 was called for the supply of One 4 Wheel Drive Tractor fitted with a Removable Loader and Attachments.
- Massey Ferguson Tractor P878 is offered for trade or outright purchase.
- Nine Tenders were received by the specified closing time.
- **Recommend**
That with Tender No. 28/05, for the Supply of One 4 Wheel Drive Tractor fitted with Removable loader and Attachments, Council accept the tender of CJD Equipment Pty Ltd for the supply of One 4 John Deere 5820 Wheel Drive Tractor fitted with Removable loader and Attachments for \$92,253.00 less trade-in of One Massey Ferguson Tractor P878 for \$28,033.32 resulting in a net payment of \$70,641.65 (including GST)

Tabled Items

Tenders received.

Officer Interest Declaration

Nil.

Strategic Implications

Corporate Services.

To achieve maximum community benefit from effective use of resources (staff, finances and information technology).

Legislation Implications

Assessment of legislation indicates that the following regulations apply:

Local Government (Functions and General Regulations 1996 s3.57 (11)(2)(f)

Council Policy/Local Law Implications

Assessment of Policies/Local Laws indicates that the following are applicable: -

Policy ENG 5 – Tendering and Purchasing.

Budget/Financial Implications

Current budget allocation \$65,000.

Recommended Tender \$64,219.68 net.

Consultation

Departmental Coordinator/Operators/Mechanical staff.

BACKGROUND

Council currently owns a Massey Ferguson Tractor P878 that is utilised by Parks and Reserves in their Maintenance Programme. The tractor is required to load mulch, sand and general waste and will also be required to use the following attachments post hole digger, slasher and fertiliser spreader.

Tenderers were to ensure that the tractor offered is designed to operate the loader and attachments.

Tenders were therefore called for the supply of One 4 Wheel Drive Tractor with Removable Loader and attachments.

DETAILS OF TENDERS RECEIVED

Five companies submitted tenders for the supply of One 4 Wheel Drive Tractor with Removable Loader and attachments.

- *CJD Equipment Pty Ltd offered two options*
- *Wattleup tractors offered two options*
- *Range Equipment offered one option*
- *Wanneroo Agricultural Machinery offered two options.*
- *E & MJ Rosher offered two options*

One offer was received for trade or outright purchase of Massey Ferguson P878.

SELECTION CRITERIA

The selection criteria and weightings for the evaluation of the tenders are as follows:

Table 1: Selection Criteria – Purchase

ITEM NO	DESCRIPTION	WEIGHTING
1.	Tender Proposal	10%
2.	Operational Assessment	20%
3.	Mechanical Assessment	20%
4.	Whole of Life Costs	50%
	Total	100%

TENDERS RECEIVED

Table 2 : Tenders Received

Option 1					
Tractor	CJD Equipment Pty Ltd	Wanneroo Agricultural Machinery	E & MJ Rosher	Wattleup Tractors	Range Equipment
MODEL	John Deere 5820	McKormick CX85	Kubota ME8200DHI	MF5435 4C	Claas Celtic 436
PRICE	\$92,253.00	\$71,730.00	\$78,200.00	\$85,545.90	\$82,700.00
TRADE	\$28,033.32	\$20,025.00	\$15,000.00	\$19,800.00	\$19,500.00
<i>* Net Price</i>	<i>\$64,219.68</i>	<i>\$51,705.00</i>	<i>\$63,200.00</i>	<i>\$65,745.90</i>	<i>\$63,200.00</i>

Option 2				
Tractor	CJD Equipment Pty Ltd	Wanneroo Agricultural Machinery	E & MJ Rosher	Wattleup Tractors
MODEL	John Deere 5425 VP2400	Case JX10804	Kubota M95X	MF5445 4C
PRICE	\$85,628.10	\$82,814.40	\$85,700.00	\$87,228.90
TRADE	\$26,889.30	\$22,027.50	\$15,000	\$19,800.00
<i>* Net Price</i>	<i>\$58,738.80</i>	<i>\$60,786.90</i>	<i>\$70,700</i>	<i>\$67,428.90</i>

One offer for Outright purchase was received for \$14,276 from John Tully, Brookton

TENDER EVALUATION

Of the nine tenders received operational and mechanical staff assessed six tractors. Three tractors were not available for inspection and assessment; these tenders were from Range Equipment and E & MJ Rosher.

All machines inspected were of a high standard and met Council requirements. Operational staff assessed the John Deere 5820 as being the best tractor for ergonomics, features and ease of operation. Cabin noise levels whilst operating the tractor were considered to be much lower in the John Deere 5820. Service points were easier for the operator to access to carry out daily/weekly checks.

Mechanical staff rated the John Deere 5820 highest for ease of maintenance and for vehicle design and construction. The John Deere 5820 has a one-piece heavy-duty chassis construction, which distributes the weight of the loader evenly across the tractor.

CJD is a well-established company who have provided a high level of service to the City of Armadale in the past for a range of machinery.

Referee checks were carried out with the following Councils: City of Cockburn, City of South Perth, City of Kalgoorlie, Town of Bassendean and the Shire of Gingin

Table 3: - Tender Ranking

Tenderer	Ranking
CJD Equipment Pty Ltd(Option 1)	1
Wanneroo Agricultural (Option 2)	2
CJD Equipment Pty Ltd(Option 2)	3
Wanneroo Agricultural (Option 1)	4
Wattleup Tractors (Option 1)	5
Wattleup Tractors (Option 2)	6
E & MJ Rosher (Option 1)	7
E & MJ Rosher (Option 2)	8
Range Equipment	9

CONCLUSION

It is thus recommended that the tender be awarded to CJD Equipment Pty Ltd, who have satisfied the selection criteria and are ranked number one in the tender evaluation.

T121/11/05 RECOMMEND

That with Tender No. 28/05, for the for the Supply of One 4 Wheel Drive Tractor fitted with Removable loader and Attachments, Council accept the tender of CJD Equipment Pty Ltd for the supply of One 4 John Deere 5820 Wheel Drive Tractor fitted with Removable loader and Attachments for \$92,253.00 less trade-in of One Massey Ferguson Tractor P878 for \$28,033.32 resulting in a net payment of \$70,641.65 (including GST)

MOVED Cr Best
MOTION CARRIED/LOST (7/0)

TENDER NO.27/05 – SUPPLY OF ONE MULTI TYRED ROLLER

WARD All
FILE REF: TEN/27/05
DATE 31 October
2005
REF JC
RESPONSIBLE
MANAGER MTS

In Brief:

- Tender No. 27/05 was called for the supply of One Multi Tyred Roller.
- Multipac Roller P153 is offered for trade or outright purchase.
- Three Tenders were received by the specified closing time.
- **Recommend**
That with Tender No. 27/05, for the Supply of One Multi Tyred Roller, Council accept the tender of WEL-QUIP for the supply of one Multi Tyred Roller for \$141,676 less trade-in of One Multipac Roller for \$40,000 resulting in a net payment of \$111,843.60 (including GST)

Tabled Items

Tenders received.

Officer Interest Declaration

Nil.

Strategic Implications

Corporate Services

To achieve maximum community benefit from effective use of resources (staff, finances and information technology).

Legislation Implications

Assessment of legislation indicates that the following regulations apply:

Local Government (Functions and General Regulations 1996 s3.57 (11)(2)(f)

Council Policy/Local Law Implications

Assessment of Policies/Local Laws indicates that the following are applicable: -

Policy ENG 5 – Tendering and Purchasing.

Budget/Financial Implications

Current budget allocation \$160,000

Recommended Tender \$101,676 net

Transactions are subject to variation and therefore funding in the Plant Reserve is based on long-term allocations. The unspent funds should remain in the Plant Reserve.

Consultation

Departmental Coordinator/Operators/Mechanical staff.

BACKGROUND

Council currently owns a Multipac Multi Tyred Roller that is utilised by Civil Works Road Construction Programme to achieve the necessary compaction required for road construction. This machine is due for replacement.

Tenders were therefore called for the supply of One Multi Tyred Roller.

DETAILS OF TENDERS RECEIVED

Three companies submitted tenders for the supply of one Multi Tyred Roller.

- *Westrac*
- *WEL-QUIP*
- *BT Equipment.*

SELECTION CRITERIA

The selection criteria and weightings for the evaluation of the tenders are as follows:

Table 1: Selection Criteria – Purchase

Item No	Description	Weighting
1.	Tender Proposal	10%
2.	Operational Assessment	20%
3.	Mechanical Assessment	20%
4.	Whole of Life Costs	50%
	Total	100%

TENDERS RECEIVED

Table 1: Tenders Received

Roller	Westrac	WEL-QUIP	BT Equip
MODEL	PF-300C	Multipac VP2400	Bomag BW 24R
PRICE	\$182,480	\$141,676	\$151,800
TRADE	\$15,000	\$40,000	\$27,500
* Net Price	\$167,480	\$101,676	\$124,300

Tender Evaluation

All three machines are capable of carrying out the required work; both the Bomag BW24R and the Multipac VP2400 have Cummins engines, which have proven to be reliable in the past. Both machines are similar in cab layout and provide excellent operator ergonomics, the Multipac VP2400 has additional safety features added which includes safety railing around engine bay and fuelling area. Council currently owns a Multipac VP200 which has proven to be a reliable machine only requiring normal maintenance.

WEL-QUIP is a well-established company who have provided a high level of service to the City of Armadale in the past for a number of machines.

Referee checks were carried out with the following: City of Swan, Shire of Dumbleyung, City of Mandurah, Shire of Chittering, Shire of Wongan-Ballidu and Main Roads.

Table 1 : Tender Ranking

Tenderer	Ranking
WEL-QUIP	1
BT Equipment	2
Westrac	3

CONCLUSION

It is thus recommended that the tender be awarded to WEL-QUIP, who have satisfied the selection criteria and are ranked number one in the tender evaluation.

T122/11/05 RECOMMEND

That with Tender No. 27/05, for the Supply of One Multi Tyred Roller, Council accept the tender of WEL-QUIP for the supply of one Multi Tyred Roller for \$141,676 less trade-in of One Multipac Roller for \$40,000 resulting in a net payment of \$111,843.60 (including GST)

MOVED Cr Knezevich
MOTION CARRIED/LOST (7/0)

LATE ITEMS

Nil

COUNCILLORS' ITEMS

Cr Stewart – Signage to promote events

On behalf of the Highland Gathering Cr Stewart requested that officers investigate the cost of signage on South West Highway/Armadale Road to promote events. This could be in the way of “sleeves” which could be erected near the time of events and dismantled afterwards.

Cr Stewart – Westfield Park Heron Reserve

Cr Stewart advised that he had received a letter from the Friends of Westfield Park Heron Reserve requesting Council’s help in maintaining this wetland area by providing facilities for young people in the oval adjoining Westfield Park Primary School.

He requested that Council Officers contact the Water Authority seeking its intentions for this wetland area and Council Officers also lobby the Local Member of Parliament for Armadale to enlist her aid in requesting the Water Authority enhance and maintain the compensating basin at the back of Westfield Park Primary School.

T123/11/05

RECOMMEND

That Councillors’ items listed as follows:

- **Signage to Promote Events**
- **Westfield Park Heron Reserve**

be referred to the appropriate Directorate for action and/or report back to Committee

MEETING CLOSED 8.56 PM.

