

## Appendix E: Traffic Management Plan

## Traffic Management Concept Overview:

The extent of the Viaduct structural works due to occur in the Armadale precinct will require the incremental closures of several main roads within the area.  
– Including but not limited to (Armadale Road / Forrest Road / Church Avenue)

As a project, BRE are committed to limiting the impact of these required closures on the general public and as such are working towards a strategy to manage these closures which aligns with the following concept:

### **Note:**

The below images are indicative only of the construction stage concept – Refer to the following pages which depict overview of each detour impact.

- To mitigate traffic congestion during the road closure periods – Construction team shall coordinate works relating to these x3 main road closures.
- It is the current intent that only 1 closure shall be active at any given time to provide traffic with the other two as alternative routes during the period of closure.

### Armadale Road Closure



### Forrest Road Closure



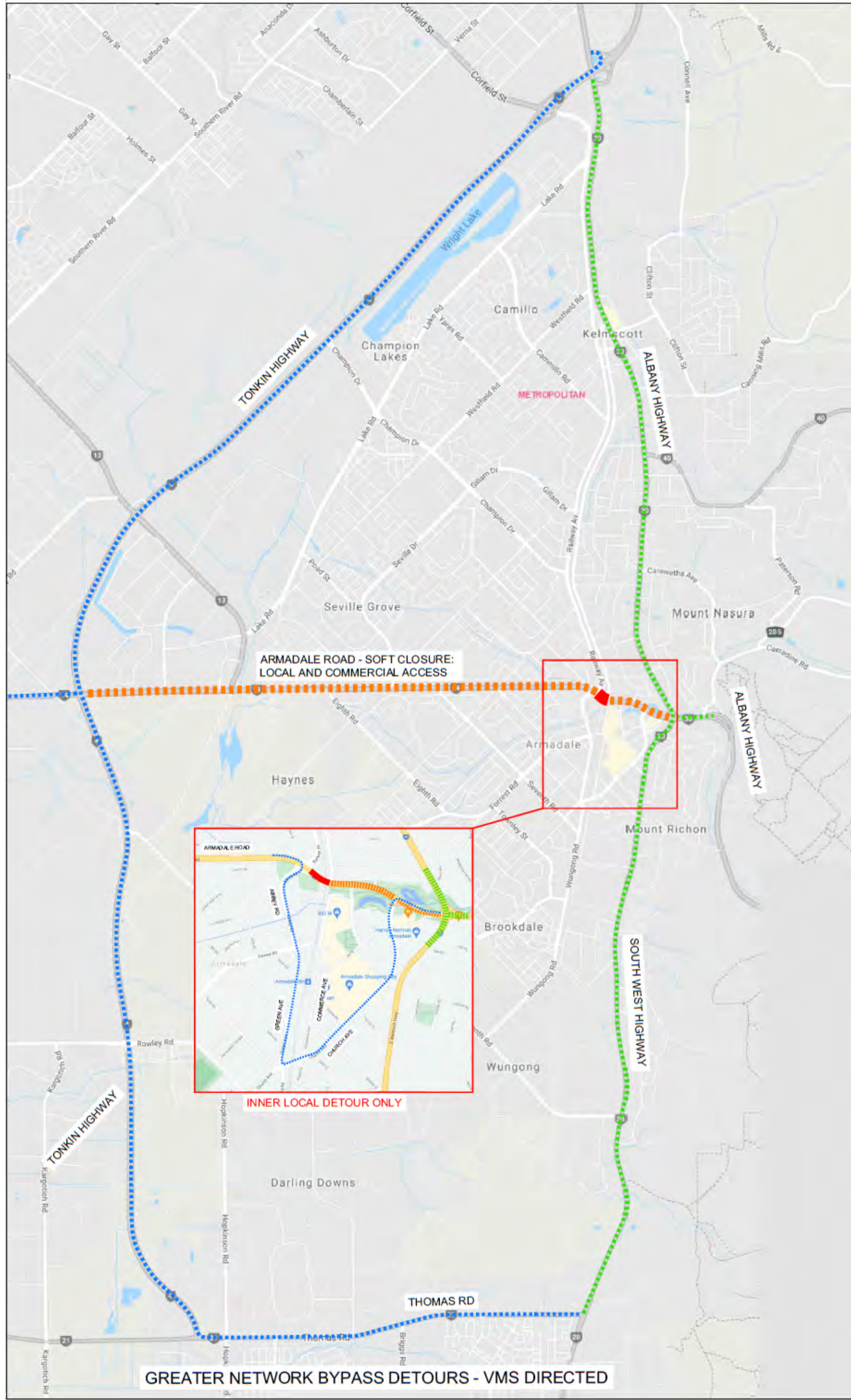
### Church Avenue Closure





ARMADALE ROAD CLOSURE – DETOUR MAP

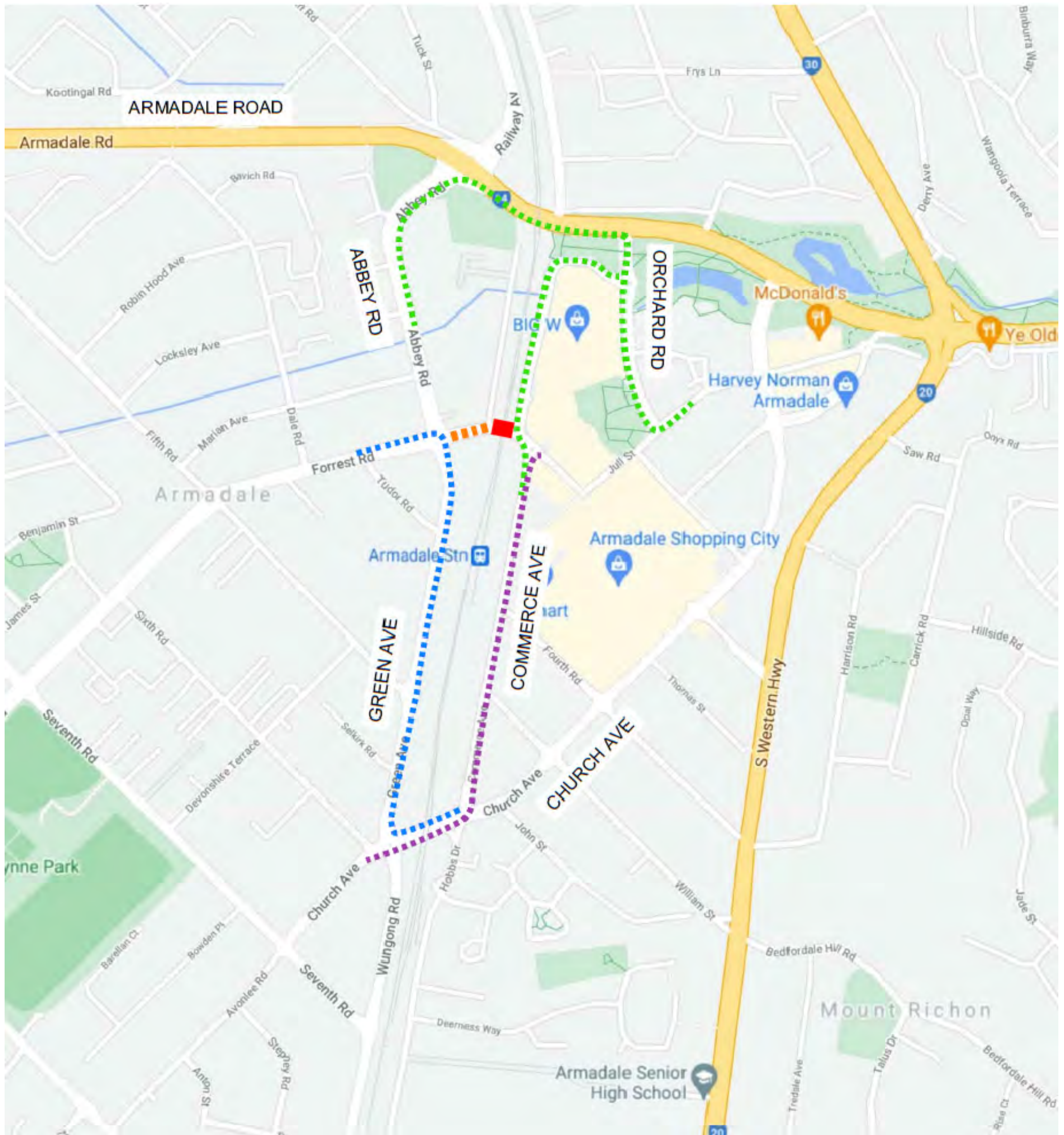
Traffic Management – Concept  
Aston Williams





# FORREST ROAD CLOSURE – DETOUR MAP

Traffic Management – Concept  
Aston Williams





# CHURCH AVENUE CLOSURE – DETOUR MAP

Traffic Management – Concept  
Aston Williams

