



Hall Name: **FORRESTDALE HALL**

Location Weld Street, Forrestdale

Suitable for Meetings and social gatherings.

Parking 24 bays *plus* overflow next to tennis court. Suitable for wheelchairs

Toilets Outside Male—1 cubicle, 1 urinal, 1 sink

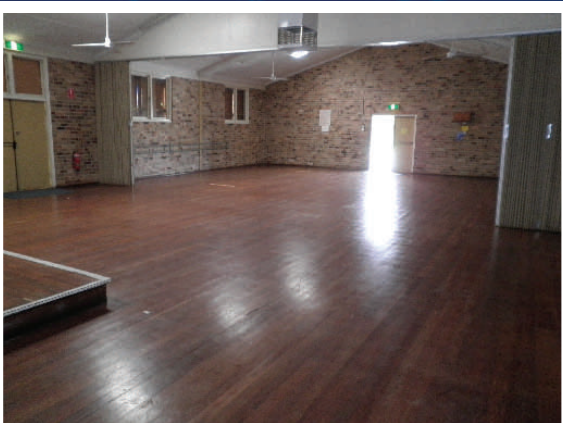
Female—2 cubicles & 1 sink





MAIN HALL

ITEMS	COMMENTS
Capacity	100
Tables	8
Chairs	89
Cooling / Heating	Air con
Power Points	2 double – RCD & 1 single – RCD
Stage	1
Doors	1 consatina dividing door
Flooring	Wooden
Lights	16 fluros
Severy	Connecting to main hall
Fire Exits	2 doors
Fire Extinguisher	2 – powder fire extinguishers





KITCHEN

ITEMS	COMMENTS
Fridge	1
Oven	1 electric oven
Rheem Laser System	1
Sink	1 single
Benches	Bench space
Heating / cooling	1 ceiling fan
Power Points	2 double – RCD & 1 single – RCD
Servery	Connecting to the Main Hall
Flooring	Vinyl
Lights	2 fluros



FORRESTDALE HALL – MISCELLANEOUS

Any chairs and tables that the Hirer requires above the number noted for each facility will need to be hired privately by the Hirer.

Equipment such as whiteboards, projectors, computers etc is to be brought in by the Hirer and may be subject to inspection and clearance by Council's Electrician prior to use at the facility.

Cups and Saucers not provided.

For bookings:

City of Armadale – Bookings Office
Address: 7 Orchard Avenue, Armadale

Postal: Locked Bag 2, Armadale WA 6992

Phone: 93990111

Call Outs

Property Supervisor - Phone: 9399 0824

